

River

for the Melbourne Guitar Quartet

Robert Davidson

$\text{♩} = 90$

f

4

mp

8

12

16

ff *f*

22

mf

26

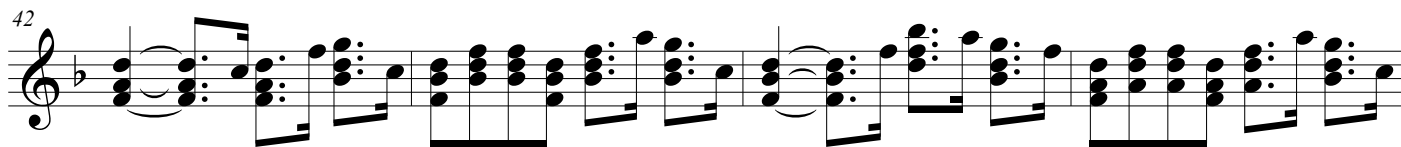
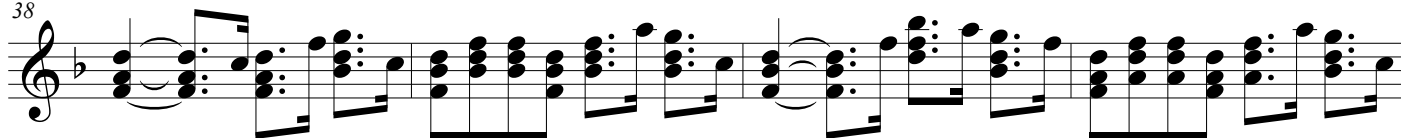
f

30

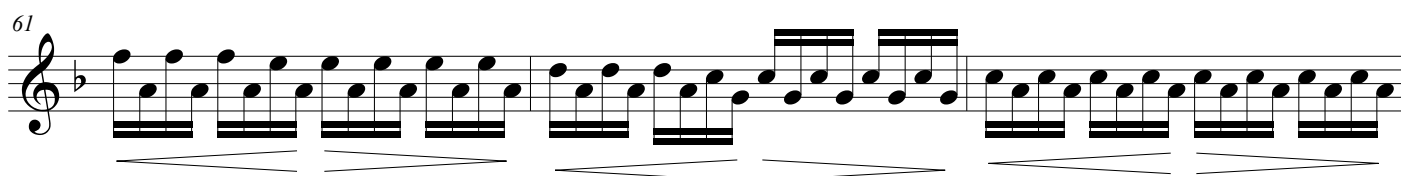
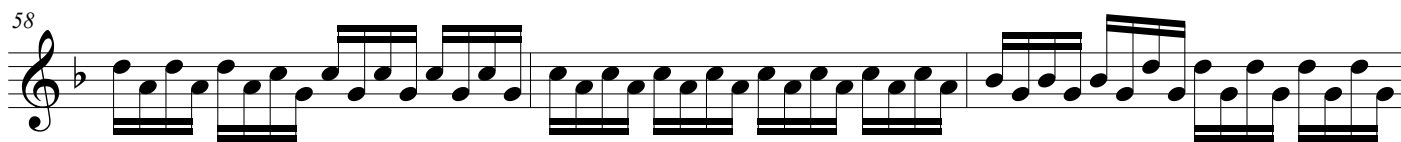
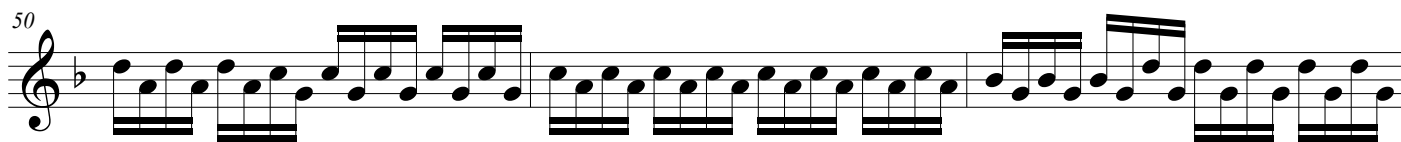
34

River

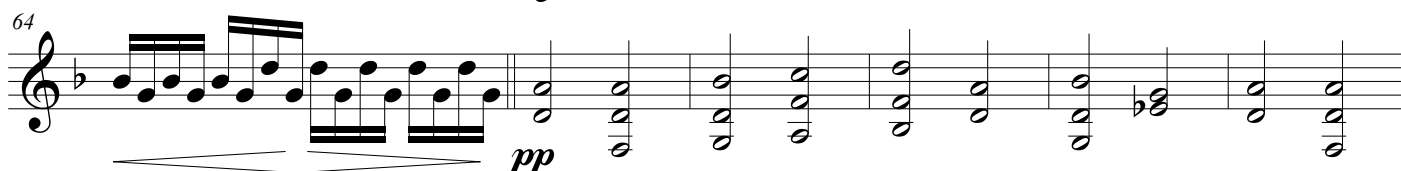
2
38



ff



$\text{♩} = 76$



70

Musical score for 'The Rose Tree' (continued). The melody continues on the treble clef staff with a key signature of one flat (B-flat). The notes are: G4, A4, Bb4, A4, G4, F4, E4, D4, C4, Bb3, A3, G3, F3, E3, D3, C3, Bb2, A2, G2, F2, E2, D2, C2, Bb1, A1, G1, F1, E1, D1, C1, Bb0, A0, G0, F0, E0, D0, C0, Bb-1, A-1, G-1, F-1, E-1, D-1, C-1, Bb-2, A-2, G-2, F-2, E-2, D-2, C-2, Bb-3, A-3, G-3, F-3, E-3, D-3, C-3, Bb-4, A-4, G-4, F-4, E-4, D-4, C-4, Bb-5, A-5, G-5, F-5, E-5, D-5, C-5, Bb-6, A-6, G-6, F-6, E-6, D-6, C-6, Bb-7, A-7, G-7, F-7, E-7, D-7, C-7, Bb-8, A-8, G-8, F-8, E-8, D-8, C-8, Bb-9, A-9, G-9, F-9, E-9, D-9, C-9, Bb-10, A-10, G-10, F-10, E-10, D-10, C-10, Bb-11, A-11, G-11, F-11, E-11, D-11, C-11, Bb-12, A-12, G-12, F-12, E-12, D-12, C-12, Bb-13, A-13, G-13, F-13, E-13, D-13, C-13, Bb-14, A-14, G-14, F-14, E-14, D-14, C-14, Bb-15, A-15, G-15, F-15, E-15, D-15, C-15, Bb-16, A-16, G-16, F-16, E-16, D-16, C-16, Bb-17, A-17, G-17, F-17, E-17, D-17, C-17, Bb-18, A-18, G-18, F-18, E-18, D-18, C-18, Bb-19, A-19, G-19, F-19, E-19, D-19, C-19, Bb-20, A-20, G-20, F-20, E-20, D-20, C-20, Bb-21, A-21, G-21, F-21, E-21, D-21, C-21, Bb-22, A-22, G-22, F-22, E-22, D-22, C-22, Bb-23, A-23, G-23, F-23, E-23, D-23, C-23, Bb-24, A-24, G-24, F-24, E-24, D-24, C-24, Bb-25, A-25, G-25, F-25, E-25, D-25, C-25, Bb-26, A-26, G-26, F-26, E-26, D-26, C-26, Bb-27, A-27, G-27, F-27, E-27, D-27, C-27, Bb-28, A-28, G-28, F-28, E-28, D-28, C-28, Bb-29, A-29, G-29, F-29, E-29, D-29, C-29, Bb-30, A-30, G-30, F-30, E-30, D-30, C-30, Bb-31, A-31, G-31, F-31, E-31, D-31, C-31, Bb-32, A-32, G-32, F-32, E-32, D-32, C-32, Bb-33, A-33, G-33, F-33, E-33, D-33, C-33, Bb-34, A-34, G-34, F-34, E-34, D-34, C-34, Bb-35, A-35, G-35, F-35, E-35, D-35, C-35, Bb-36, A-36, G-36, F-36, E-36, D-36, C-36, Bb-37, A-37, G-37, F-37, E-37, D-37, C-37, Bb-38, A-38, G-38, F-38, E-38, D-38, C-38, Bb-39, A-39, G-39, F-39, E-39, D-39, C-39, Bb-40, A-40, G-40, F-40, E-40, D-40, C-40, Bb-41, A-41, G-41, F-41, E-41, D-41, C-41, Bb-42, A-42, G-42, F-42, E-42, D-42, C-42, Bb-43, A-43, G-43, F-43, E-43, D-43, C-43, Bb-44, A-44, G-44, F-44, E-44, D-44, C-44, Bb-45, A-45, G-45, F-45, E-45, D-45, C-45, Bb-46, A-46, G-46, F-46, E-46, D-46, C-46, Bb-47, A-47, G-47, F-47, E-47, D-47, C-47, Bb-48, A-48, G-48, F-48, E-48, D-48, C-48, Bb-49, A-49, G-49, F-49, E-49, D-49, C-49, Bb-50, A-50, G-50, F-50, E-50, D-50, C-50, Bb-51, A-51, G-51, F-51, E-51, D-51, C-51, Bb-52, A-52, G-52, F-52, E-52, D-52, C-52, Bb-53, A-53, G-53, F-53, E-53, D-53, C-53, Bb-54, A-54, G-54, F-54, E-54, D-54, C-54, Bb-55, A-55, G-55, F-55, E-55, D-55, C-55, Bb-56, A-56, G-56, F-56, E-56, D-56, C-56, Bb-57, A-57, G-57, F-57, E-57, D-57, C-57, Bb-58, A-58, G-58, F-58, E-58, D-58, C-58, Bb-59, A-59, G-59, F-59, E-59, D-59, C-59, Bb-60, A-60, G-60, F-60, E-60, D-60, C-60, Bb-61, A-61, G-61, F-61, E-61, D-61, C-61, Bb-62, A-62, G-62, F-62, E-62, D-62, C-62, Bb-63, A-63, G-63, F-63, E-63, D-63, C-63, Bb-64, A-64, G-64, F-64, E-64, D-64, C-64, Bb-65, A-65, G-65, F-65, E-65, D-65, C-65, Bb-66, A-66, G-66, F-66, E-66, D-66, C-66, Bb-67, A-67, G-67, F-67, E-67, D-67, C-67, Bb-68, A-68, G-68, F-68, E-68, D-68, C-68, Bb-69, A-69, G-69, F-69, E-69, D-69, C-69, Bb-70, A-70, G-70, F-70, E-70, D-70, C-70, Bb-71, A-71, G-71, F-71, E-71, D-71, C-71, Bb-72, A-72, G-72, F-72, E-72, D-72, C-72, Bb-73, A-73, G-73, F-73, E-73, D-73, C-73, Bb-74, A-74, G-74, F-74, E-74, D-74, C-74, Bb-75, A-75, G-75, F-75, E-75, D-75, C-75, Bb-76, A-76, G-76, F-76, E-76, D-76, C-76, Bb-77, A-77, G-77, F-77, E-77, D-77, C-77, Bb-78, A-78, G-78, F-78, E-78, D-78, C-78, Bb-79, A-79, G-79, F-79, E-79, D-79, C-79, Bb-80, A-80, G-80, F-80, E-80, D-80, C-80, Bb-81, A-81, G-81, F-81, E-81, D-81, C-81, Bb-82, A-82, G-82, F-82, E-82, D-82, C-82, Bb-83, A-83, G-83, F-83, E-83, D-83, C-83, Bb-84, A-84, G-84, F-84, E-84, D-84, C-84, Bb-85, A-85, G-85, F-85, E-85, D-85, C-85, Bb-86, A-86, G-86, F-86, E-86, D-86, C-86, Bb-87, A-87, G-87, F-87, E-87, D-87, C-87, Bb-88, A-88, G-88, F-88, E-88, D-88, C-88, Bb-89, A-89, G-89, F-89, E-89, D-89, C-89, Bb-90, A-90, G-90, F-90, E-90, D-90, C-90, Bb-91, A-91, G-91, F-91, E-91, D-91, C-91, Bb-92, A-92, G-92, F-92, E-92, D-92, C-92, Bb-93, A-93, G-93, F-93, E-93, D-93, C-93, Bb-94, A-94, G-94, F-94, E-94, D-94, C-94, Bb-95, A-95, G-95, F-95, E-95, D-95, C-95, Bb-96, A-96, G-96, F-96, E-96, D-96, C-96, Bb-97, A-97, G-97, F-97, E-97, D-97, C-97, Bb-98, A-98, G-98, F-98, E-98, D-98, C-98, Bb-99, A-99, G-99, F-99, E-99, D-99, C-99, Bb-100, A-100, G-100, F-100, E-100, D-100, C-100, Bb-101, A-101, G-101, F-101, E-101, D-101, C-101, Bb-102, A-102, G-102, F-102, E-102, D-102, C-102, Bb-103, A-103, G-103, F-103, E-103, D-103, C-103, Bb-104, A-104, G-104, F-104, E-104, D-104, C-104, Bb-105, A-105, G-105, F-105, E-105, D-105, C-105, Bb-106, A-106, G-106, F-106, E-106, D-106, C-106, Bb-107, A-107, G-107, F-107, E-107, D-107, C-107, Bb-108, A-108, G-108, F-108, E-108, D-108, C-108, Bb-109, A-109, G-109, F-109, E-109,

77

3

p


83

87 

90



93 **Tempo 1**



ff

This musical score segment contains measures 93 through 96. It is marked with a tempo change to 'Tempo 1' and a fortissimo 'ff' dynamic. The notation is in treble clef with a key signature of one flat (B-flat). The melody consists of eighth and sixteenth notes, often beamed together, with some notes having accents. The bass line is mostly eighth notes, with some sixteenth notes and rests. The overall feel is more rhythmic and driving than the previous section.

97 

101

Example 101

105

Musical notation for measure 105, featuring a treble clef, a key signature of one flat (B-flat), and a complex rhythmic pattern with eighth and sixteenth notes, including triplets and a final whole note.