

Flute

Robert Davidson

Bond over triads

Flute

# Bond over triads

Robert Davidson

$\text{♩} = 128$

**A**

*mf*

10

13

**B**

17

20

23

28

**C**

32

*p*

The image displays a musical score for the song "The Rose Tree". It consists of three staves of music, each beginning with a measure number (35, 38, and 41) and a treble clef. The key signature is one flat (B-flat). The first staff (measures 35-37) features a melody with eighth and sixteenth notes, including triplets. The second staff (measures 38-40) continues the melody with similar rhythmic patterns and triplets. The third staff (measures 41-43) concludes the melody with a final triplet and a double bar line. To the right of the third staff, there is a box containing the letter "D" and the number "16", indicating a specific fingering or a page reference. Below the third staff, there is a large, stylized "V" symbol.

61

*mp*

64

E

*p*

70

*p*

76

*p*

80

*p*

84

F

*f*

90

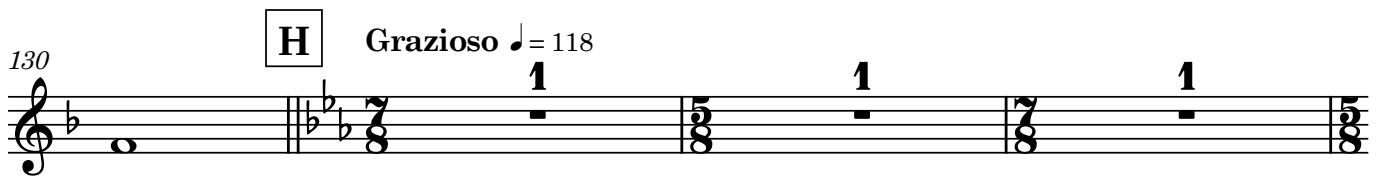
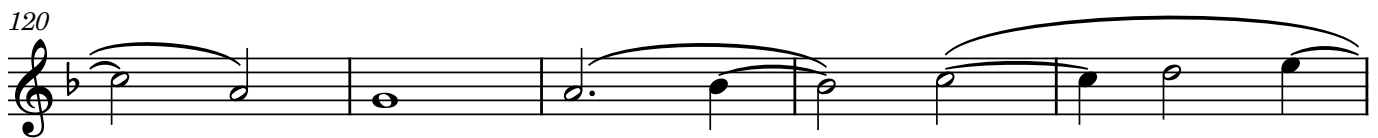
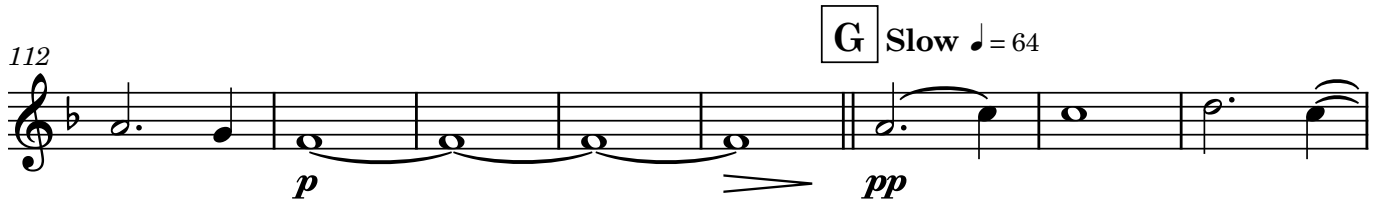
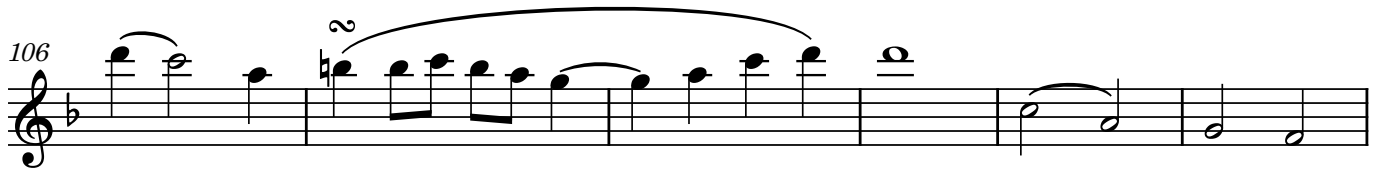
*mf*

97

*mf*

102

*mf*



134

*mp* 5

138

142

I

*p*

146

150

154

159

163

168

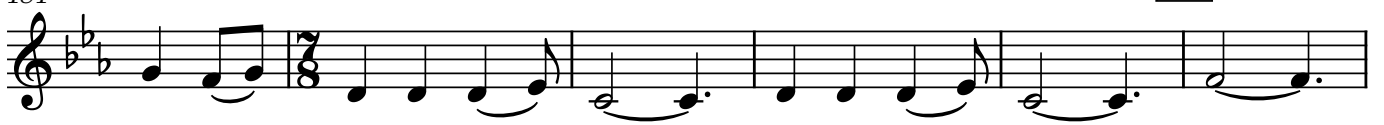
172



176



181



187



194 **M** Presto ♩ = 144

*f*

196 *ff* 3 3 7

198

200 3 3 7

202

204

206

208

210 7 7



212 N Tempo I *p*

215

218

221

224 O *f*

227

230

233

Detailed description of the musical score: The score is written for a single flute part. It begins at measure 212 with a series of eighth notes, some with accents. A box containing the letter 'N' is placed above the staff. The tempo is marked 'Tempo I'. The dynamics are marked 'p' (piano) at measure 212 and 'f' (forte) at measure 224. A box containing the letter 'O' is placed above the staff at measure 224. The score includes various musical notations such as slurs, accents, triplets, and a final fermata at measure 233. The key signature is two flats (B-flat and E-flat) and the time signature is 3/4.